

# ALTERNATE TAKE

*Beloved aesthetics are revamped with striking accents and unique takes on form and texture.*

PHOTOGRAPHY BY **NELSON HUANG** MODEL: **MAYA** (NIWA MODELS)

HAIR AND MAKEUP BY **RONNIE TREMBLAY** (P1M) STYLING BY **HALEY DACH** HAIR AND MAKEUP ASSISTANT: **KATHY NGUYEN** (P1M)

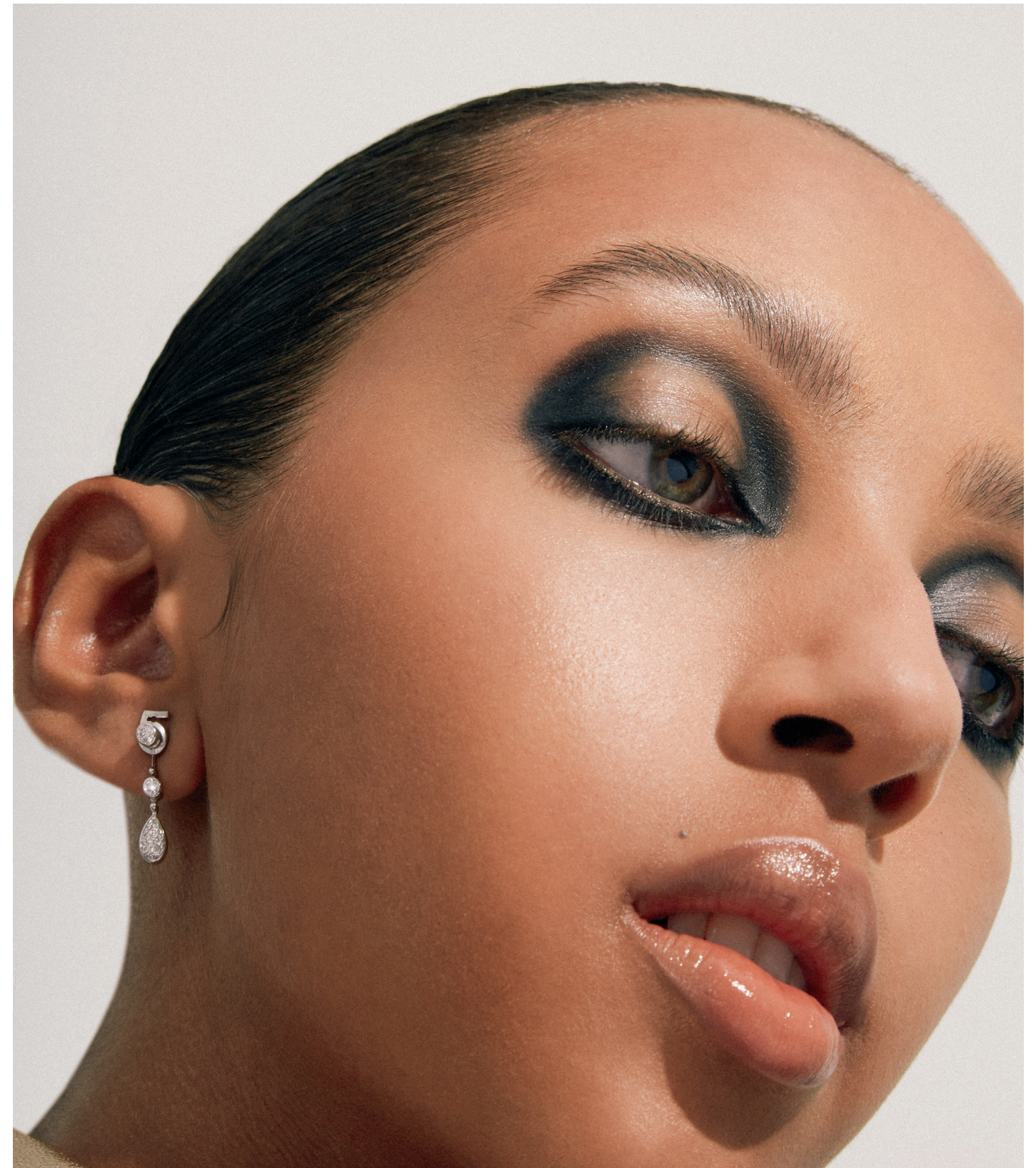
PHOTOGRAPHY ASSISTANT: **MARC SANTOS** TEXT BY **DAVID SARIC**



## Subtly Smouldering

A smoky eye has an everlasting appeal. Begin by applying Fenty Beauty's Snap Shadows Mix & Match Eyeshadow Palette in Tan Linez on the outermost parts of the eyelid, gradually fading into the brow. Follow with a more matte texture, using Fenty Beauty's Snap Shadows Mix & Match Eyeshadow Palette in Chestnutz on the brow bone for an understated appearance. Complete the look with a satiny red lip, applying Dior's Rouge Dior in 999 Satin for a fascinating finish.

Dress by Marciano; earrings by Humbertown Jewellers.



## Graphic Allure

A matte black hue is anything but somber. Create a contour on the eyelid with CHANEL Stylo Yeux Waterproof in shade 10 Ébène, applying repeatedly to build up a captivating opacity. Opt for a neutral glossy lip such as NARS Soft Matte Tinted Lip Balm in Intimate, as well as a glowing flush tone on the cheek with Laura Mercier Colour Infusion Blush in Bellini to add elegant and restrained contrast to a bold statement.

Earrings by CHANEL.

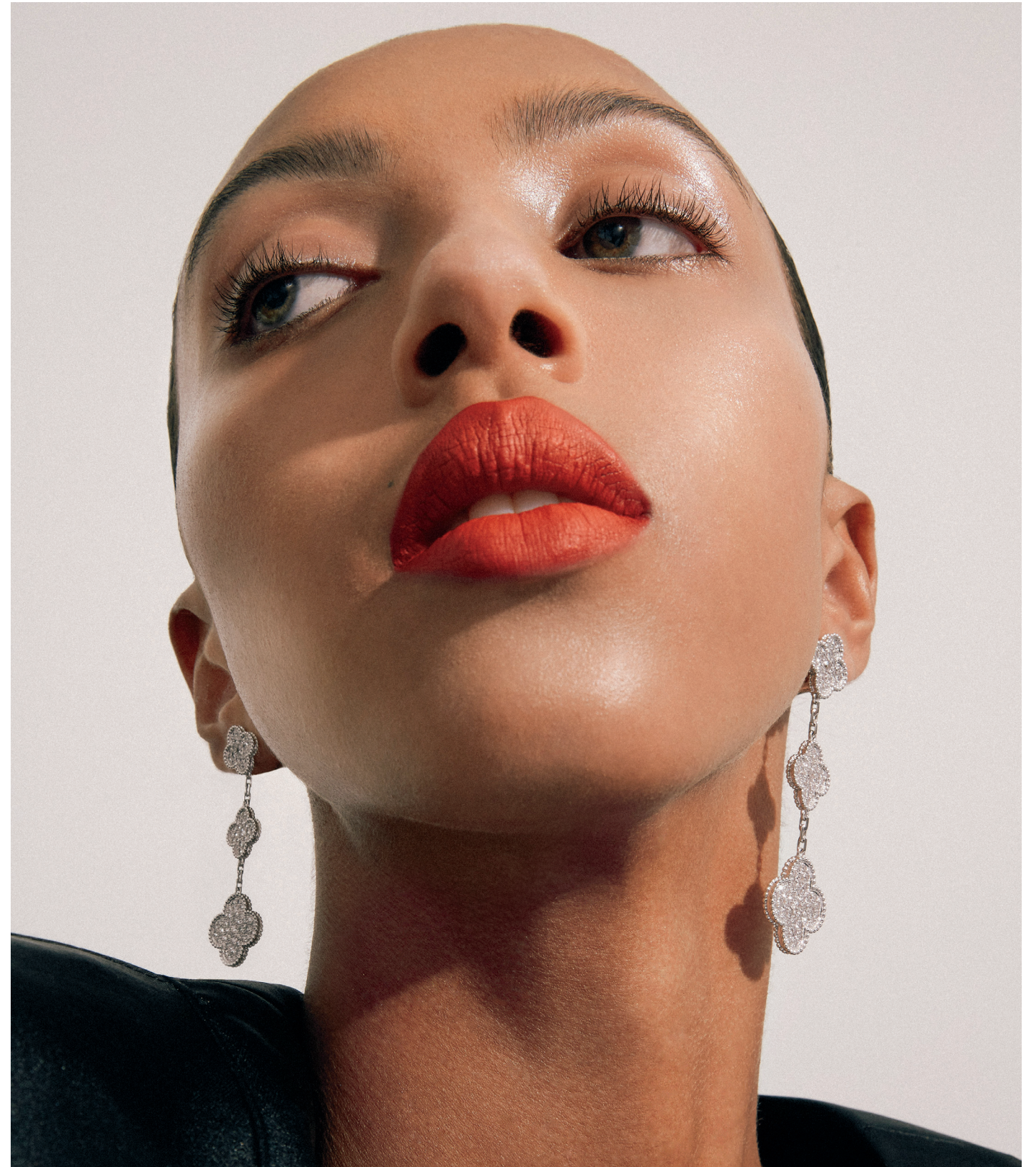




**Shimmering Sight**

Sourcing inspiration from the natural lustre of gold, create a fascinating eyeshadow look that revels in smooth radiance. Begin with the rose gold pigment of Dior's Mono Couleur Couture in 570 Copper on the outer eyelid, and in a circular wash placement, fade the silver tone of Dior's Mono Couleur Couture in 006 Pearl Star into the inner corner of the lid for a high-impact contrasting finish.

Sweater by 2 Moncler 1952; earrings by Cartier.



**Focal Point**

An all-over minimal beauty moment allows for a daring pop of crimson to take centre stage. To mimic the reflective qualities of glass, apply Minori's Cream Highlighter in Golden (available at The Detox Market) for a pared-down appearance with a subtle texture. Then, use BITE Beauty's Outburst Longwear Lip Stain in the shade Orange Fizz to amplify the pout with a vivid intensity, taking advantage of the tried-and-true appeal of lusciously pigmented lips.

Top by Tibi; earrings by Van Cleef & Arpels.